



(19) **United States**

(12) **Patent Application Publication**
Ghasemi et al.

(10) **Pub. No.: US 2015/0072133 A1**

(43) **Pub. Date: Mar. 12, 2015**

(54) **LOCALIZED SOLAR COLLECTORS**

Publication Classification

(71) Applicant: **Massachusetts Institute of Technology,**
Cambridge, MA (US)

(51) **Int. Cl.**
F24J 2/51 (2006.01)
F24J 2/48 (2006.01)
B23P 19/00 (2006.01)

(72) Inventors: **Hadi Ghasemi,** Houston, TX (US); **Amy Marie Marconnet,** West Lafayette, IN (US); **Gang Chen,** Carlisle, MA (US); **George Wei Ni,** Ann Arbor, MI (US)

(52) **U.S. CL.**
CPC **F24J 2/515** (2013.01); **B23P 19/00** (2013.01); **F24J 2/48** (2013.01)
USPC **428/312.6**; 29/428; 428/312.2

(21) Appl. No.: **14/479,307**

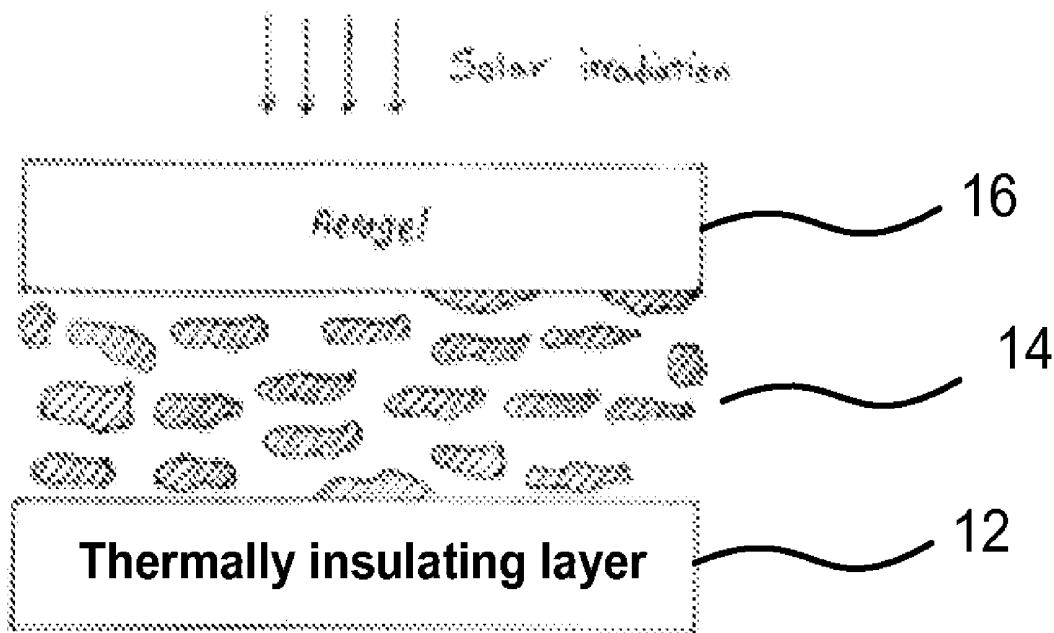
(57) **ABSTRACT**

(22) Filed: **Sep. 6, 2014**

A localized heating structure, and method of forming same, for use in solar systems includes a thermally insulating layer having interconnected pores, a density of less than about 3000 kg/m³, and a hydrophilic surface, and an expanded carbon structure adjacent to the thermally insulating layer. The expanded carbon structure has a porosity of greater than about 80% and a hydrophilic surface.

Related U.S. Application Data

(60) Provisional application No. 61/874,390, filed on Sep. 6, 2013.



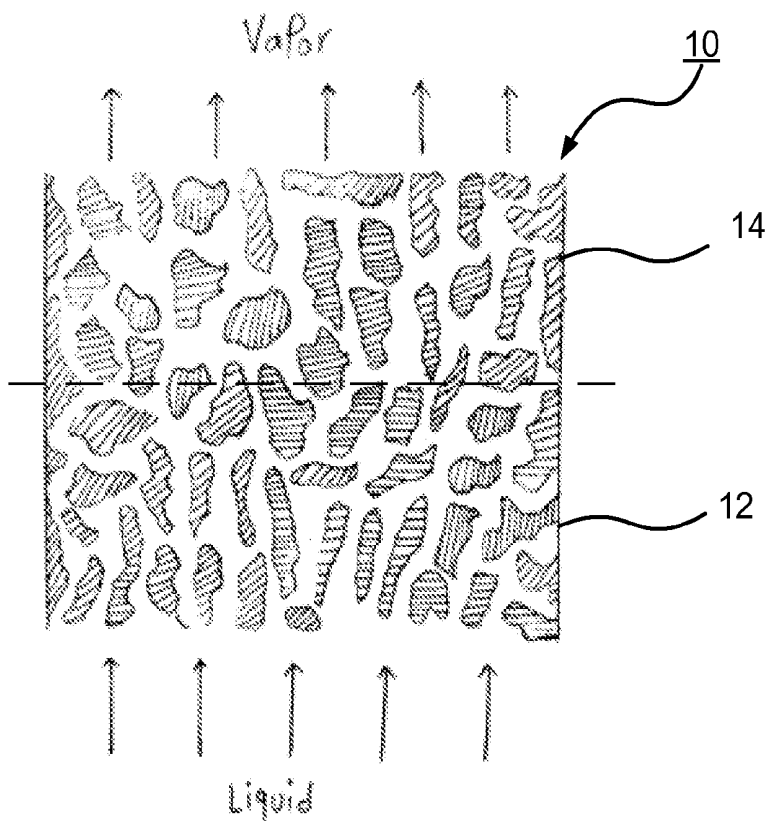


FIG. 1

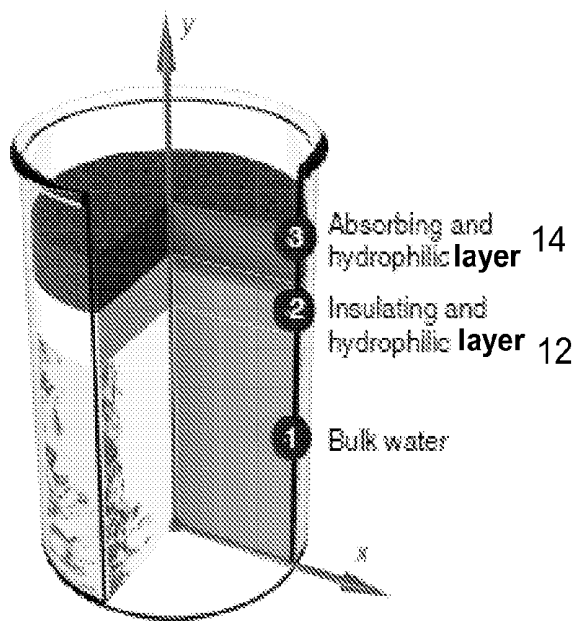


FIG. 2

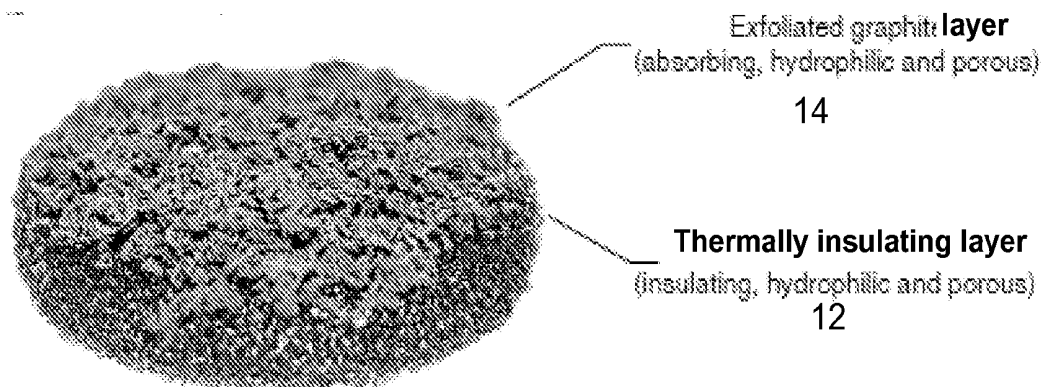


FIG. 3A

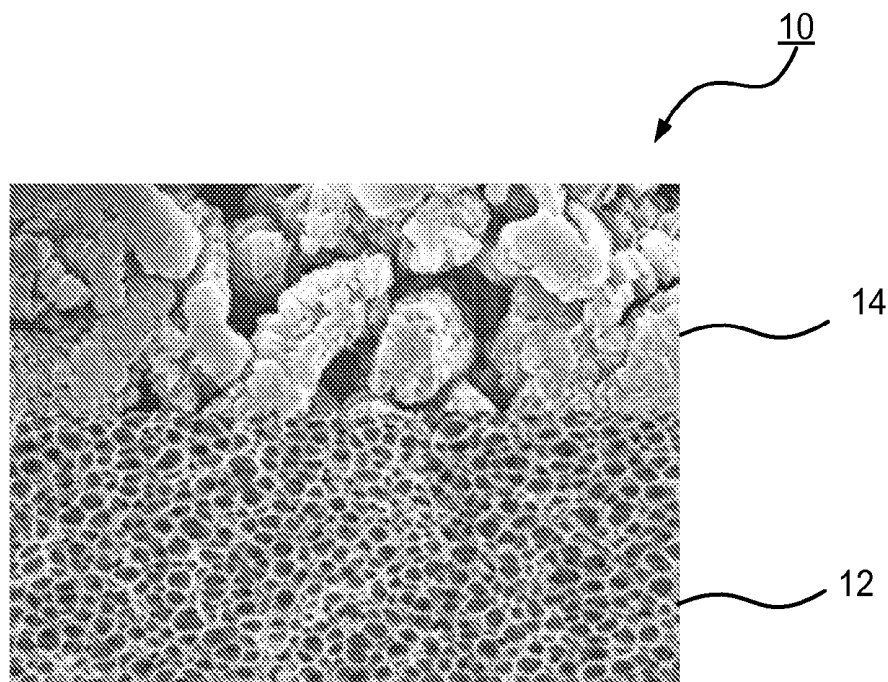


FIG. 3B

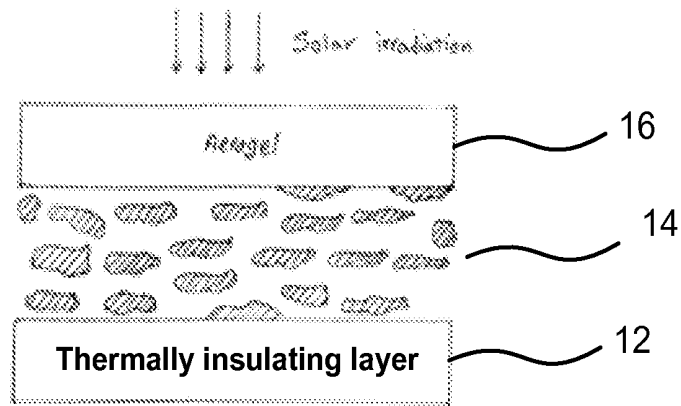


FIG. 4

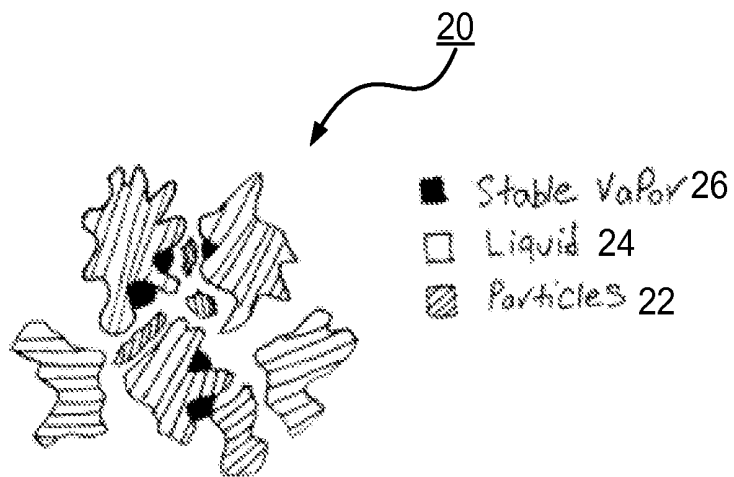


FIG. 5

LOCALIZED SOLAR COLLECTORS

CROSS-REFERENCE TO RELATED APPLICATIONS

[0001] This patent application claims the benefit of U.S. Provisional Patent Application No. 61/874,390 filed Sep. 6, 2013, the disclosure of which is incorporated by reference herein in its entirety.

STATEMENT REGARDING FEDERALLY SPONSORED RESEARCH OR DEVELOPMENT

[0002] This invention was made with Government support under Contract Nos. DE-SC0001299 and DE-FG02-09ER46577 awarded by the Department of Energy and under Contract No. FA9550-11-1-0174 awarded by the Air Force Office of Scientific Research. The Government has certain rights in the invention.

TECHNICAL FIELD

[0003] The present invention relates to structures that promote localized heating, and more specifically to structures for promoting the heating and phase change of liquids for use with solar collectors and other heating systems to harvest solar energy.

BACKGROUND ART

[0004] Solar irradiation is a promising source of renewable energy, as the hourly incident solar flux on the surface of the earth is greater than the annual global energy consumption. This resource is utilized in a variety of applications divided mostly into two main areas: photovoltaics and photo-thermal applications. Photo-thermal applications for harvesting solar energy currently suffer from low efficiency and require high concentrations of sunlight, which add complexity and cost to the solar energy harvesting systems. These applications are divided into three categories: low, medium, and high temperature. Currently, low and medium temperature applications are limited to small-scale residential and commercial use. In high temperature applications, concentrated solar power (CSP) systems have recently been used to produce steam with the temperature of approximately 450° C. The superheated steam drives a heat engine (efficiency of 35-40%) to generate electricity. The thermal efficiency (η_{th}) of these systems are defined as

$$\eta_{th} = \frac{\dot{m}h_{LV}}{C_{opt}q_i} \quad (1)$$

[0005] where \dot{m} denotes the mass flow rate, h_{LV} total enthalpy of liquid-vapor phase change, C_{opt} the optical concentration, and q_i the direct solar irradiation.

[0006] Solar collectors are one type of system to harvest low-temperature solar energy. In these collectors, working fluid (mostly water) flows through a solar panel to absorb irradiated power. These collectors are divided into two groups: surface and volumetric collectors. Conventional surface-based solar collectors (e.g., those which use a black surface to absorb sunlight and transfer the thermal energy to the adjacent working fluid) have a typical efficiency, η_{th} , of 52%. Volumetric collectors have been recently proposed and utilize nanofluids—fluids seeded with nanoparticles—to har-

vest solar energy. A range of nanoparticles (NPs) and fluids are considered for these collectors. For example, Otanicar et al. in “Nanofluid-based direct absorption solar collector,” *Journal of Renewable and Sustainable Energy* 2, 033102 (2010) used nanofluids of carbon nanotubes (CNT), graphite, and silver NPs in these solar collectors. The η_{th} efficiency of 55% and 57% was achieved with graphite and silver NPs, respectively. Tyagi et al. in “Predicted Efficiency of a Low-Temperature Nanofluid-Based Direct Absorption Solar Collector,” *Journal of Solar Energy Engineering* 131, 041004 (2009) showed 10% increase in η_{th} of solar collectors by using Al NPs-water as the working fluid. The enhanced efficiency of volumetric collectors compared to the surface collectors is attributed to three factors: higher absorbance of nanofluids due to NPs, uniform temperature in the fluid, and enhanced thermal conductivity of nanofluid. If NPs smaller than the mean free path of the bulk material are used, the absorption spectrum is typically broadened with no change in absorption peak leading to enhanced absorption efficiency. The measured absorbance of these nanofluids can reach 95% and the rest is the reflectance. However, the critical drawback of these systems is the high portion of heat loss by convection which is between 28-41% as measured by Otanicar et al., mentioned above. This limitation puts a cap on further development of volumetric collectors. In both surface and volumetric collectors, nearly half of the absorbed energy is dissipated to the surrounding medium and is converted to low-quality energy. This suggests new approaches are needed to minimize the dissipated heat in order to boost the photo-thermal efficiency of the solar collectors.

[0007] With another approach, localization of thermal energy is suggested to drive a thermally-activated phenomenon. Local heating of NPs is achieved through illumination by electromagnetic waves (e.g., generally, lasers). The local temperature rise around these NPs is used for a range of applications. For example, Sershen et al. in “Temperature-sensitive polymer—nanoshell composites for photothermally modulated drug delivery,” *Journal of Biomedical Materials Research* 51, 293-298 (2000) utilized the photo-thermal local heating for drug-delivery. Specifically, Au NPs in a microgel structure show enhanced temperatures with laser illumination and cause a collapse in the surrounding hydrogel matrix. The burst leads to the release of any soluble material held in the hydrogel. Lowe et al. in “Laser-induced temperature jump electrochemistry on gold nanoparticle-coated electrodes,” *Journal of the American Chemical Society* 125, 14258-9 (2003) locally heated the surface of gold nanoparticle-coated indium tin oxide (ITO) electrodes in an electrolyte solution. The induced temperature rise impacts the open-circuit potential of the electrode. Jones and Lyon in “Photothermal patterning of microgel/gold nanoparticle composite colloidal crystals,” *Journal of the American Chemical Society* 125, 460-5 (2003) introduced local photo-thermal heating for phase-change of a microgel/gold nanoparticle composite colloid. By illuminating with a laser resonant with Au plasmon absorption, they introduced local heating to cause a crystalline-amorphous phase change in the microgel matrix. In these approaches, high-quality energy is introduced locally to drive a physical or chemical phenomenon.

[0008] For surface plasmon (SP) induced heating, Govorov et al. developed a model to predict maximum temperature rise at the surface of plasmonic NPs as

$$T = T_{\infty} + \frac{R_{NP}^2 \omega}{3k} \operatorname{Re} \left(\frac{3\epsilon_0}{2\epsilon_0 + \epsilon_{NP}} \right)^2 \operatorname{Im}(\epsilon_{NP}) \frac{8\pi I_0}{c\sqrt{\epsilon_0}} \quad (2)$$

[0009] where T_{∞} denotes the temperature of the medium, R_{NP} the radius of the NP, k the thermal conductivity of the medium, ω the frequency of the incident wave, ϵ_0 dielectric constant of the medium, ϵ_{NP} dielectric constant of the NP, I_0 the intensity of the electromagnetic wave in the medium, and c the speed of light. This equation suggests that $(T - T_{\infty}) \propto R_{NP}^2$. Keblinski et al. in "Limits of localized heating by electromagnetically excited nanoparticles," *Journal of Applied Physics* 100, 054305 (2006) studied the limit of the global temperature rise of a NP under illumination by electromagnetic waves. They solved the diffusive heat equation with constant heat flux at the surface of the NP. In the liquid and amorphous phases due to lack of crystallinity, the mean free path is on the order of atomic distances and consequently the applicability of the diffusive heat equation at the nanoscale is justified. The maximum temperature rise on the NP is given by

$$T = T_{\infty} + \frac{C_{opt} q_i \sigma_p}{4\pi k r_{np}} \quad (3)$$

[0010] where σ_p denotes the cross-sectional area of the NP and r_{np} the radius of NP. Similarly, by analogy with electrostatics, the temperature rise for an ensemble of NPs that form an agglomerate with the radius of R_{ag} is

$$T = T_{\infty} + \frac{\rho_N R_{ag} C_{opt} q_i \sigma_p}{2\kappa} \quad (4)$$

[0011] where ρ_N denotes the concentration of particles per volume. For plasmonic NPs, a comparison of the temperature rise calculated from the existing theories and the measured temperature rise from experiments generally does not show a good agreement between the theory and the experiments. The discrepancy suggests that the fundamental understanding of heat generation at this scale is still unresolved. The interfacial thermal resistance, the role of hot electrons, and the mechanism of heat transfer at this scale (ballistic or diffusive) are among the open questions.

[0012] Local heating can be utilized in the heating or phase-change of water to harvest solar energy. Efficient harvesting of solar energy for steam generation is a key factor for a broad range of applications, from large-scale power generation, absorption chillers, and desalination systems to compact applications such as water purification for drinking, sterilization, and hygiene systems in remote areas where the only abundant energy source is the sun. Current methods of generating steam using solar energy rely on a surface or cavity to absorb the solar radiation, and transferring heat to the bulk liquid directly or via an intermediate carrier fluid. These methods, however, require high optical concentration and suffer from high optical loss and surface heat loss, or require vacuum to reduce convective heat loss under moderate optical concentration. The steam generated is usually in thermal equilibrium with the bulk liquid. Nanofluids have been studied as volumetric absorbers, potentially minimizing the sur-

face energy loss by uniform temperature in the fluid and enhanced thermal conductivity of the nanofluid. Local generation of steam in a cold bulk liquid can be achieved through high concentrations or illumination of nanofluids by electromagnetic waves with high power intensity. Recently, Neumann et al. in "Solar vapor generation enabled by nanoparticles," *ACS Nano* 7, 42-9 (2012) and "Compact solar autoclave based on steam generation using broadband light-harvesting nanoparticles," *Proc. Natl. Acad. Sci. U.S.A.* 110, 11677-81 (2013) succeeded in the generation of steam in bulk water with Au NPs with the power of 10^3 kW/m (optical concentration, C_{opt} , of 1000). However, the solar-thermal conversion efficiency of the approach was still only 24%. High optical concentrations limit the utilization of these approaches in stand-alone compact solar systems. Furthermore, high optical concentrations add complexity and cost to the solar-thermal conversion system.

SUMMARY OF EMBODIMENTS

[0013] In accordance with one embodiment of the invention, a localized heating structure for use in solar systems includes a thermally insulating layer having interconnected pores, a density of less than about 3000 kg/m^3 , and a hydrophilic surface, and an expanded carbon structure adjacent to the thermally insulating layer. The expanded carbon structure has a porosity of greater than about 80% and a hydrophilic surface. Methods of forming the localized heating structure are also provided.

[0014] In some embodiments, the thermally insulating layer may have a thermal conductivity of less than about 10 W/(mK) . The thermally insulating layer may include carbon foam and/or an aerogel, such as a silica aerogel. The expanded carbon structure may be an expanded graphite layer. The thermally insulating layer may have a thickness of less than about 20 cm and/or the expanded carbon structure may have a thickness of less than about 10 cm. The pores of the thermally insulating layer may have an average diameter of about 300-600 μm . The localized heating structure may further include an aerogel layer adjacent to the expanded carbon structure so that the expanded carbon structure is between the aerogel layer and the thermally insulating layer. The aerogel layer may include a silica aerogel and the thermally insulating layer may also include a silica aerogel.

BRIEF DESCRIPTION OF THE DRAWINGS

[0015] The foregoing features of the invention will be more readily understood by reference to the following detailed description, taken with reference to the accompanying drawings, in which:

[0016] FIG. 1 schematically shows a localized heating structure according to embodiments of the present invention;

[0017] FIG. 2 schematically shows a localized heating structure in a container with water according to embodiments of the present invention in a container with water;

[0018] FIGS. 3A and 3B show a perspective view and cross-sectional view, respectively, of a localized heating structure with an expanded graphite layer according to embodiments of the present invention;

[0019] FIG. 4 schematically shows a localized heating structure having an aerogel layer according to embodiments of the present invention; and

[0020] FIG. 5 schematically shows a volumetric absorber according to embodiments of the present invention.

DESCRIPTION OF ILLUSTRATIVE
EMBODIMENTS

[0021] Various embodiments of the present invention provide structures that harvest solar energy efficiently in the form of heat. These structures concentrate the solar energy locally where it is needed and consequently minimize the dissipated thermal energy. The structures described herein aim to enhance the surface evaporation, to boost the efficiency of solar heating and to achieve local boiling at low C_{opt} by minimizing heat dissipation to the surrounding medium.

[0022] As discussed in more detail below, one embodiment of a localized heating structure provides a layered structure which absorbs solar illumination and confines the thermal energy (formation of a hot spot) to near the structure's surface while efficiently wicking the fluid to this hot spot for enhanced evaporation flux. This localized heating structure yields a solar-thermal conversion efficiency of 85% at 10 kWm^{-2} solar illumination, while generating steam in open air. One example of a localized heating structure includes a double layer structure (DLS). The DLS includes a thermally insulating, hydrophilic layer having a network of interconnected pores supporting a porous, hydrophilic, expanded carbon structure. The four main characteristics of the localized heating structure include (1) high absorption in the solar spectrum, (2) low thermal conductivity to suppress thermal conduction away from the hot internal region, (3) hydrophilic surfaces (i.e., contact angle, θ , $<90^\circ$) to leverage capillary forces and promote fluid flow to the hot region, and (4) interconnected pores for fluid flow to and from the structure. Localization of heat is achieved by the broad-spectrum absorbing and thermally insulating properties of the heating structure while the fluid flow is channeled to the hot spot by its hydrophilic and porous nature. The enhancement in the fluid evaporation rate through the heating structure is an increasing function of the solar concentration and for incident power equivalent to one sun (1000 W/m^2), this enhancement is 1.9 times that of water without the heating structure. The thermal efficiency of this structure is 71% and 80% for solar power 1000 W/m^2 and 2000 W/m^2 , respectively.

[0023] In another embodiment, a heating structure localizes the solar energy internally for solar heating. The heating structure includes a porous, expanded carbon structure sandwiched between two thermally insulating layers, such as aerogel layers, e.g., silica aerogel layers. A hot region is induced in the expanded carbon structure and the low surface temperature of the top thermally insulating layer minimizes the energy dissipation by convection and radiation. The thermal efficiency of this system can reach close to 100% by proper design of the thermally insulating layers.

[0024] In another embodiment, a hydrophobic, volumetric absorbing structure promotes the nucleation of a vapor phase throughout the liquid volume, which significantly enhances the rate of boiling. With this volumetric absorber structure, the threshold concentration of solar energy required for local phase-change is reduced drastically compared to previous structures. The mechanism of local phase-change may be extended to other micro- and nanoparticles (NPs) and other base fluids. Details of illustrative embodiments are discussed below. Although the discussion below describes structures for the heating and phase change of water, other liquids may also be used.

[0025] FIG. 1 schematically shows a localized heating structure **10** according to embodiments of the present invention, and FIG. 2 shows an exemplary heating structure in a

container with water. The heating structure **10** includes a bottom layer having a thermally insulating, hydrophilic layer **12** with a network of interconnected pores and a top layer having a porous, hydrophilic, expanded carbon structure **14**. Preferably, the thermally insulating layer **12** has a thermal conductivity of less than about 10 W/(mK) . As shown in FIG. 3B, the thermally insulating bottom layer **12** is configured with smaller pore sizes than the top layer **14** in order to promote liquid supply and the expanded carbon structure top layer **14** is configured with larger pore sizes than the bottom layer **12** in order to promote vapor escape. Preferably, the density of the thermally insulating layer **12** is less than about 3000 kg/m^3 and the pores of the thermally insulating layer **12** have an average diameter of about $300\text{-}600 \mu\text{m}$. The expanded carbon structure **14** preferably has a porosity of greater than about 80%.

[0026] The low surface temperature of the heating structure **10** minimizes losses due to thermal convection and radiation to the environment. For a constant heat generation, the steady state solution of a diffusive heat equation with boundaries at T_∞ provides the maximum temperature at the center of the slab

$$T = T_\infty + \frac{C_{opt} q_i h}{4\kappa}. \quad (5)$$

[0027] Where h denotes the thickness of slab. At low values of C_{opt} by proper selection of the medium, the value of κ can be tuned to achieve a hot spot in the center of slab. For example, for a slab with thickness of 1 cm under solar illumination with no optical concentration $C_{opt}=1$ and the thermal conductivity of 0.03 W/(mK) , the temperature rise can reach to 83° C .

[0028] The porous structure and hydrophilic surface of the localized heating structure **10** promotes the flow of water to the surface due to capillary force. For a pore with diameter of a , the capillary rise (h_c) is given by

$$h_c = \frac{2\gamma \cos\theta}{\rho g} \quad (6)$$

[0029] where γ denotes the liquid-vapor surface tension, θ the contact angle, ρ the density of fluid, and g gravitational acceleration. For a hydrophilic surface ($\theta < 90^\circ$), h_c is positive and for a hydrophobic surface ($\theta > 90^\circ$), h_c is negative. To leverage the capillary force in the surface evaporation, the surfaces of both layers of the heating structure **10** are made hydrophilic. The capillary force in the expanded carbon layer **14** enhances the evaporation rate of fluid through a few mechanisms, e.g., formation of thin films on the surface of graphite sheets, enhanced roughness of the surface, and formation of three-phase contact lines at the edges of the capillaries.

[0030] As shown in FIG. 2, the localized heating structure **10** is a floating structure that includes two or more layers of which the bottom layer is a porous, thermally insulating layer **12**, such as carbon foam or an aerogel, and the top layer is the porous, expanded carbon structure **14**, such as expanded graphite. The bottom layer **12** helps to further suppress the thermal conduction from the hot region in the top layer **14** to the bulk underlying water. The combination of these two layers concentrates the incident solar power locally near the

surface of the liquid where the thermal energy for evaporation is needed. As shown with the arrows in FIG. 1, during the evaporation process, the fluid wicks into the pores in the thermally insulating layer 12, then into the hot spot in the expanded carbon structure 14, evaporates and forms vapor, which leaves the heated structure 10 from the top surface of the expanded carbon structure 14. Preferably, the thickness of the thermally insulating layer 12 may be less than about 20 cm, and the thickness of the expanded carbon structure 14 may be less than about 10 cm, and preferably about 5 to about 8 mm, although other thicknesses may also be used depending on the materials and desired application. The top layer 14 may also be made to be magnetic, which facilitates its collection after use, through the addition of iron during the fabrication procedure, as described in more detail below.

[0031] The reflectivity of the expanded carbon structure 14 is preferably less than about 10% in the solar spectrum (250-2250 nm). Thus, 90% or more of the irradiated solar power is absorbed within the top layer 14. Absorption in the top layer 14 induces the hot spot or region in the top layer 14 of the heating structure 10 where evaporation occurs. The thermal energy concentrated in this region can be transferred through several modes, e.g., liquid-vapor phase change, convection to the air, and conduction to the bottom underlying water. The last two modes of heat loss (convection and dissipation to the deeper water) should be minimized to boost the thermal efficiency of the evaporation process. Convection is strongly affected by the surface temperature of the heating structure. With the solar illumination of one sun, assuming h of 10 W/(m²K), this mode dissipates approximately 10% of the incident solar power to the environment. The porous, thermally insulating bottom layer 12 of the heating structure 10 minimizes conduction to the water. Thus, embodiments of the heating structure 10 enhance the evaporation rate while keeping the underlying water temperature low by channeling the heat and fluid to where they are needed. For example, when the thermally insulating bottom layer 12 is formed from a carbon foam, the foam structure itself has a thermal conductivity of 0.03-0.05 W/(mK) in air. Once it is immersed in the water, the thermal conductivity of the bottom layer is determined by the effective medium theory because water within the foam also conducts heat.

[0032] Therefore, the thermally insulating layer 12 is preferably chosen so that it has a low thermal conductivity even when soaked in water or the liquid to be evaporated. The thermally insulating layer 12 is important for localizing thermal energy within the top layer 14. Preferably, the thermally insulating layer 12 includes both open and closed pores. The closed pores have several advantages, e.g., floating the structure, lowering the thermal conductivity, and limiting the fluid flow to the surface. Low thermal conductivity and limited fluid flow lead to the formation of the hot spot and generation of steam in the top layer 14 at low optical concentrations. The open pores provide paths for fluid to flow to the surface.

[0033] The top expanded carbon structure 14 may be formed from a low thermally conductive expanded graphite layer which absorbs solar irradiation volumetrically. For example, the expanded graphite layer may be formed from acid-washed graphite flakes (commercially available from Anthracite Industries Inc.). In one embodiment, the acid-washed graphite flakes may be mixed with iron (II) acetate anhydrous, 97% (commercially available from Strem Chemicals) with a ratio of 60-40 wt %. The mixture or flakes are heated in a microwave for about 7 seconds to form an exfoliated, expanded fluffy structure.

The trapped gases between the graphite layers expand in the synthesis process and detach the flakes from each other. The volumetric exfoliation during this process is approximately 100 times. The surface area of the exfoliated graphite layer is approximately 320 m²g⁻¹, 32 times higher than unprocessed graphite flakes, which allows for more efficient heat transfer to the fluid. The dispersed iron species formed after the decomposition of iron (II) acetate provides a ferromagnetic structure. The ferromagnetism of the exfoliated graphite helps its collection after use. The acid-washed graphite flakes originally have a hydrophobic surface. However, in the exfoliation process, due to high temperature, the graphite surface is oxidized and turns into a hydrophilic surface. Other candidates for the porous, hydrophilic carbon structure 14 may include amorphous carbon foams and carbon nanotube (CNT) sponges.

[0034] The bottom thermally insulating layer 12 may be formed from carbon foam, e.g., Duocel carbon foam of type PPI 80 (80 pores per inch) (commercially available from K. R. Reynolds). In one embodiment, the carbon foam is washed in 4% molar nitric acid for 2 hrs while stirring to make its surface hydrophilic. FIGS. 3A and 3B show a perspective view and cross-sectional view, respectively, of a localized heating structure 10 with a top layer formed 14 from an expanded graphite layer and a bottom layer 12 formed from carbon foam. FIG. 3A is shown with a 5× magnification, and FIG. 3B is shown with a 43× magnification. A more detailed description of the dual layer structure and its testing parameters are described in Ghasemi et al., "Solar steam generation by heat localization," *Nature Communications*, 5:4449 (2014), incorporated by reference herein in its entirety.

[0035] Alternatively, or in addition, the thermally insulating layer 12 may be formed from an aerogel. Aerogel synthesis is well known and established processing steps can be used to synthesize the thermally insulating layer 12. For example, a procedure for synthesizing wet silica gels by the sol-gel polymerization of tetramethyl orthosilicate (TMOS) may be used. Because hydrolysis of TMOS is much faster than that of tetraethyl orthosilicate (TEOS), NH₃ is used as a condensation catalyst rather than HCl as a hydrolysis catalyst. TMOS is diluted by methanol (MeOH) followed by adding NH₃ and water. One possible mixing mole ratio of chemicals is NH₃:TMOS:water:methanol=0.07:1:4:6. Then, the sol may be gelled in a disposal vial. For example, the sol may be gelled in a disposal vial for about one week, and then the lid of the sol-gel mold may be removed. By varying the pH during the aerogel synthesis process, and/or the drying time during the drying process, the pore size of the aerogel can be controlled. Although silica aerogels are naturally strongly absorbing from 5-30 μm, absorption from 3-5 μm can be further increased through the addition of water or other dopants (e.g., carbon-based dopants) into the aerogel. The thermal conductivity of aerogels also depends strongly on its structures, which should be optimized in conjunction with its optical properties.

[0036] Embodiments of the heating structure 10 provide the maximum η_{th} which is 68% at 1000 W/m². The efficiency achieved under 1× concentration of solar illumination is about 11% higher than the maximum values previously reported. Thus, the heating structure 10 of the present invention provides a significant step forward in enhancing the efficiency of the phase-change process in solar systems and other heating systems.

[0037] The localized heating structure **10** may also include one or more additional layers on either side of or between the bottom and top layers **12**, **14**. For example, as shown in FIG. **4**, the heating structure **10** may include an aerogel layer **16** adjacent to the top layer **14**, so that the expanded carbon structure **14** is sandwiched between the aerogel layer **16** and the thermally insulating layer **12**. This configuration of the localized heating structure **10** concentrates the solar energy in a specific flow region for solar heating and minimizes the dissipated thermal energy. The aerogel layer **16** is transparent in the visible spectrum but opaque in the infrared region. Preferably, the aerogel layer **16** is formed from a silica aerogel. The thermal conductivity of silica aerogel is 0.02 ± 0.003 W/(mK). This low value of thermal conductivity allows for localization of thermal energy in the expanded carbon structure **14**. In solar heating systems, the working fluid flows through the expanded carbon structure **14** to absorb the thermal energy. Since the surface temperature of the top aerogel layer **16** is low, the energy dissipation by the convection and radiation is minimized. The thermal efficiency of this heating structure **10** can reach close to 100% by proper design of the aerogel layer **16** and the bottom layer **12**. Furthermore, embodiments having this configuration are economically a better choice than nanofluids based solar collectors. Preferably, the top aerogel layer **16** is transparent to solar radiation, but the transparency of the bottom layer **12**, when formed with an aerogel layer, is not necessary.

[0038] Embodiments of the localized heating structure **10** may be formed with various materials and layers, but should include a porous layer **14** for absorbing the solar radiation and an insulating layer **12** between the liquid to be evaporated and the porous layer **14**. The porous, absorbing layer **14** allows water or other liquids to be evaporated to be supplied to this region and vapor to escape from this region. The porous, absorbing layer **14** could be designed with low thermal conductivity such that heat does not leak out. The thermal insulation layer **12** helps to prevent the solar radiation absorbed by the porous, absorbing layer **14** from being lost to the environment by convection and by thermal radiation. For example, other layers may be incorporated below the porous, absorbing layer **14**, to better supply water to this layer **14** and/or to provide a path for the generated steam to leave the layer **14**. Other structures especially designed for the vapor passage can be incorporated into the heating structure **10**. In addition, both layers **12**, **14** are described as having hydrophilic surfaces (i.e., contact angle, θ , $< 90^\circ$), but a combination of hydrophilic and hydrophobic surfaces may also be used. For example, a composite with mixed hydrophilic and hydrophobic regions may be used to better control the liquid supply rate. In addition, the porous absorbing layer **14** can also be designed to have different porosities, smaller pores for liquid supply and larger pores for vapor escape.

[0039] For applications that require heating throughout the entire fluid volume, another embodiment of a heating structure is provided that locally absorbs and concentrates the electromagnetic illumination. As shown in FIG. **5**, a volumetric absorber **20** is formed from NPs **22** in an aqueous suspension **24**. The volumetric absorber **20** can form a homogeneous spherical agglomerate with the radius of R_{ag} . In this case, the steady state solution of the heat equation provides the maximum temperature at the center of the agglomerate of

$$T = T_{\infty} + \frac{3C_{opt}qI R_{ag}}{24\kappa} \quad (7)$$

For low optical concentration, C_{opt} , and in an aqueous solution, the expected temperature rise, T , is much smaller than the temperature required for vapor-phase nucleation. For low values of C_{opt} , the temperature rise on the NPs **22** in contact with water is small. Thus, local boiling on the surface of NPs **22** requires concentration close to $C_{opt}=100$. The developed system consists of an aqueous solution **24** of NPs **22** that have hydrophobic surfaces.

[0040] In one embodiment, a hydrophobic carbon is used, e.g., carbon black (CB) particles. For example, a nanofluid composed of these particles and water are prepared with carbon concentration of 1 wt%. The nanofluid is sonicated for 5 min to make a homogenous solution. The particles precipitate after few minutes; however, the nanofluid will undergo buoyancy-driven convection once it is exposed to a threshold concentration of solar irradiation and again becomes homogeneous. The transmittance of this fluid is less than 0.01% suggesting that the most of solar power is absorbed by the particles.

[0041] In an aqueous solution, if two hydrophobic surfaces are brought close together, the liquid water is not a stable phase between them and the liquid transforms to the vapor phase **26**. Although the formation of vapor phase is thermodynamically feasible, a kinetic barrier may limit the formation of vapor phase to only few nanometer gap between the hydrophobic surfaces.

[0042] A stability analysis is performed to demonstrate the formation of a vapor phase once two hydrophobic surfaces come close to each other. The thermodynamic potential of the system is written as

$$\Delta B = \Delta U_C - T^R \Delta S_C + P^R \Delta V_C - \sum_i \mu_i^R \Delta N_{iC} \quad (8)$$

where U denotes the internal energy, T temperature, P pressure, S entropy, V volume, μ the chemical potential, N the number of moles, subscript C the composite system, superscript R the reservoir (in this case, the liquid phase) and subscript i the components in the system.

[0043] Consider the thermodynamic potential for the V-shape pore. The reference state (state 0) is when the V-shape pore is completely filled with water. If the thermodynamic potential of the vapor state (B) is less than the value of the fully wetted state (B_0) (e.g., if $B-B_0 < 0$), there exists the possibility for the formation of a stable vapor phase. Thus, we evaluate

$$B-B_0 = (P^L - P^V)V^V + (\gamma^{LV} \cos \theta)A^{SV} + \gamma^{LV}A^{LV} \quad (9)$$

where γ^{LV} denotes the surface tension of liquid-vapor phase, A the surface area, superscript V vapor phase, superscript L liquid phase, superscript LV the liquid-vapor phase, superscript SV the solid-vapor phase. Since the radius of the liquid-vapor interface (a) is much smaller than the capillary length of water (2.6 mm), the liquid-vapor interface is assumed to be spherical. Thus,

$$\beta = \theta + \alpha - \frac{\pi}{2} \quad (10)$$

$$l = \frac{a(1 - \cos\beta)}{\sin\beta} \quad (11)$$

$$V^V = \frac{1}{3}\pi a^2 H - \frac{\pi l}{6}(3a^2 + l^2) \quad (12)$$

$$A^{LV} = \pi(a^2 + l^2) \quad (13)$$

$$A^{SV} = \frac{a\pi H}{\cos\alpha}, \text{ and} \quad (14)$$

$$H = \frac{a}{\tan\alpha}. \quad (15)$$

Assuming the Young-Laplace equation is valid at the liquid-vapor interface of these nano-scale pores, the pressure drop across the liquid-vapor interface is

$$p^L - p^V = \frac{2\gamma^{LV}\sin\beta}{a}. \quad (16)$$

[0044] Combining eqs. (10)-(16), and eq. (9) for a given contact angle of the fluid on the solid surface (θ), the difference in thermodynamic potential, $B - B_0$, is determined as a function of the angle of V-shape pore (2α). This suggests that for small contact angle the vapor phase is a stable phase in a V-shape pore. For an agglomerate of particles, these vapor phases could be interconnected. This interconnection of the vapor phase drops the thermal conductivity of medium surrounding the light-absorbing particle from the relatively high liquid value of $\sim 0.6 \text{ W m}^{-1} \text{ K}^{-1}$ to that of the vapor phase ($\sim 0.02 \text{ W m}^{-1} \text{ K}^{-1}$), which is a 30 \times reduction in the value of κ .

[0045] The rough surface on these particles provides the correct condition for the formation a stable vapor phase. The density of CB particles (ρ_{CB}) is $\sim 2000 \text{ kg/m}^3$ and their radius (r_p) is $\sim 100 \text{ nm}$. Given this and assuming the thermal conductivity of vapor phase surrounding the particles, for $C_{opt}=6$, if the size of agglomerates is more than $120 \mu\text{m}$, then the temperature of vapor phase exceeds the saturation temperature and stable vapor bubbles form.

[0046] Preferably, the size of the agglomerates ranges from $100\text{-}600 \mu\text{m}$. The vapor temperature reaches 100°C . after a several minutes, while the liquid temperature is still close to 80°C . $C_{opt}=5.5$ is the lowest concentration to generate steam with the temperature of 100°C . Using this structure, steam is generated with 200 times lower concentration than previous structures. This drastic drop in the threshold C_{opt} is attributed to the existence of the stable vapor phase in the hydrophobic surface of agglomerate of CB particles. As the thermal conductivity of vapor phase is 30 times less than that of liquid water, the threshold C_{opt} drops significantly.

[0047] The bubble grows once it is supplied enough energy for the phase transformation. As the bubble grows, the temperature inside the vapor bubble is a function of the density of particles, ρ_N . We assume ρ_N remains constant as the droplet grows. The supplied energy to the bubble contributes to both phase change at the liquid-vapor interface and thermal conduction to the liquid phase. If the vapor phase is assumed to be an ideal gas, for a vapor bubble with the radius of ($R_{ag}+r$),

combining the energy balance and the Young-Laplace equation at the liquid-vapor interface gives

$$\dot{q} = \left(\frac{h_{LV}}{RT^V} \right) \left(-\frac{8}{3} \gamma \pi \left(r - \frac{R_{ag}^3}{r^2} \right) + 4\pi r (P^L r + 2\gamma) \right) + \kappa^L (4\pi r^2) (T^S - T_\infty) \quad (17)$$

where \dot{q} is equal $q_i(\rho r R_{ag}^2)$ and R denotes the gas constant. For a given solar irradiation, \dot{q} , one can rewrite the equation in terms of the bubble growth rate, \dot{r} , and solve the differential equation for $r=r(t)$. The initial condition of this ordinary differential equation is $r(0)=R_{ag}$. The bubble grows to $500 \mu\text{m}$ in around 160 seconds.

[0048] In conclusion, embodiments significantly enhance the temperature rise on the surface of NPs and achieve local boiling at much lower solar concentrations than reported before. This approach provides the ability to tune the thermal conductivity of the surrounding medium around the NPs. In one embodiment, carbon black particles in a water solution were used. The hydrophobic surfaces of these particles promote the formation of vapor phase around these particles. Since the thermal conductivity of water vapor is 30 times less than that of liquid water, the temperature rise over these particles under the electromagnetic illumination is much higher than the NPs in contact with liquid water. Thus, local temperature for phase-change process is achieved at lower solar concentrations. Embodiments of the present invention can be extended to other absorbing and plasmonic NPs. By tuning the surface characteristics of these particles, the temperature rise over these particles can be adjusted.

[0049] Although the above discussion emphasizes hydrophobic surfaces, it is understood that the important characteristics of embodiments of the invention include clusters of micron-sized or nano-sized particles clustered together in the liquids, the clusters should strongly absorb solar radiation, and the clusters should form to create thermodynamically stable nucleation sites. Although hydrophobic materials can form such stable nucleation sites, it is understood that such sites could be also formed by using composites particles, or particles with some regions hydrophilic and other regions hydrophobic, or particles with adjusted hydrophilicity.

[0050] Embodiments of the localized heating structure **10** and the volumetric absorber **20** have the potential to be utilized in a number of applications. For example, embodiments may be used in evaporative ponds for enhanced evaporation. These ponds are used for desalination, mineral extraction, hazardous waste collection, agricultural water treatment. High evaporation rate in these ponds has both economic (fast processing) and environmental (land use) advantages. In addition, embodiments may be used in solar collectors for domestic water heating with up to 30% higher efficiency than the current technologies. Embodiments may boost the maximum temperature of water in these collectors and decrease the surface area of these collectors. Embodiments may also be used in superheated vapor generation systems, such as power plants, distillation systems, and sterilizing systems. Currently, most of these systems function with fossil fuels or electricity. Embodiments provide an efficient approach to utilize solar energy in these systems.

[0051] Although the above discussion discloses various exemplary embodiments of the invention, it should be apparent that those skilled in the art may make various modifica-

tions that will achieve some of the advantages of the invention without departing from the true scope of the invention.

What is claimed is:

1. A localized heating structure for use in solar systems, the structure comprising:

a thermally insulating layer having interconnected pores, a density of less than about 3000 kg/m^3 , and a hydrophilic surface; and

an expanded carbon structure adjacent to the thermally insulating layer, the expanded carbon structure having a porosity of greater than about 80% and a hydrophilic surface.

2. The localized heating structure of claim 1, wherein the expanded carbon structure is an expanded graphite layer.

3. The localized heating structure of claim 1, wherein the thermally insulating layer has a thermal conductivity of less than about 10 W/(mK) .

4. The localized heating structure of claim 1, wherein the thermally insulating layer comprises carbon foam.

5. The localized heating structure of claim 1, wherein the thermally insulating layer comprises a silica aerogel.

6. The localized heating structure of claim 1, wherein the thermally insulating layer has a thickness of less than about 20 cm.

7. The localized heating structure of claim 1, wherein the pores of the thermally insulating layer have an average diameter of about $300\text{-}600 \text{ }\mu\text{m}$.

8. The localized heating structure of claim 1, wherein the expanded carbon structure has a thickness of less than about 10 cm.

9. The localized heating structure of claim 1, further comprising an aerogel layer adjacent to the expanded carbon structure so that the expanded carbon structure is between the aerogel layer and the thermally insulating layer.

10. The localized heating structure of claim 9, wherein the aerogel layer comprises a silica aerogel and the thermally insulating layer comprises a silica aerogel.

11. A method of forming a localized heating structure for use in solar systems, the method comprising:

providing a thermally insulating layer having interconnected pores, a density of less than about 3000 kg/m^3 , and a hydrophilic surface; and

providing an expanded carbon structure adjacent to the thermally insulating layer, the expanded carbon structure having a porosity of greater than about 80% and a hydrophilic surface.

12. The method of claim 11, wherein the expanded carbon structure is an expanded graphite layer.

13. The method of claim 11, wherein the thermally insulating layer has a thermal conductivity of less than about 10 W/(mK) .

14. The method of claim 11, wherein the thermally insulating layer comprises carbon foam or a silica aerogel.

15. The method of claim 11, wherein the thermally insulating layer has a thickness of less than about 20 cm.

16. The method of claim 11, wherein the pores of the thermally insulating layer have an average diameter of about $300\text{-}600 \text{ }\mu\text{m}$.

17. The method of claim 11, wherein the expanded carbon structure has a thickness of less than about 10 cm.

18. The method of claim 11, further comprising forming an aerogel layer adjacent to the expanded carbon structure so that the expanded carbon structure is between the aerogel layer and the thermally insulating layer.

19. The method of claim 18, wherein the aerogel layer comprises a silica aerogel and the thermally insulating layer comprises a silica aerogel.

* * * * *